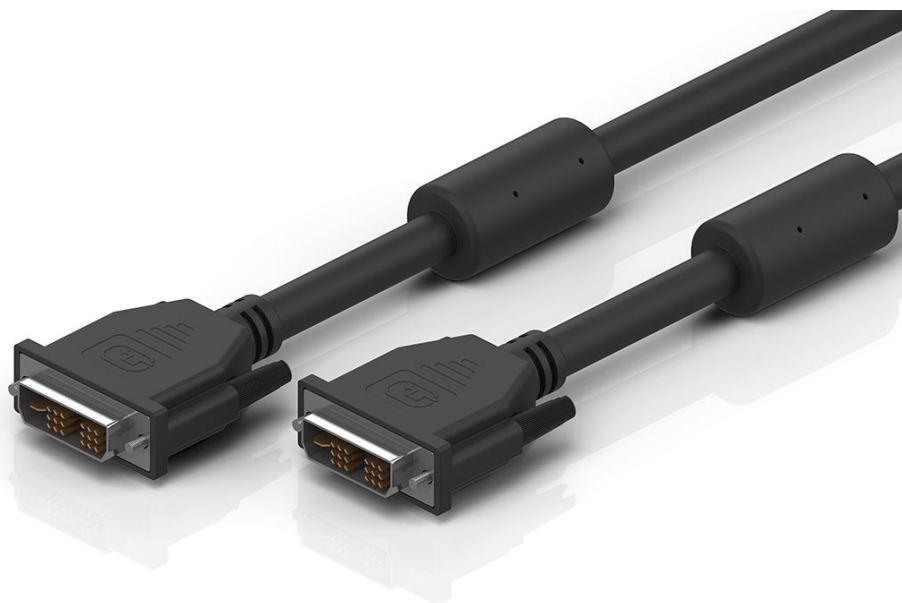


C9900-K527,-K549,-K550,-K568 | Display cable, shielded, PVC, fixed installation, black



DVI-D, plug, straight, male, 18 + 1-pin – DVI-D, plug, straight, male, 18 + 1-pin



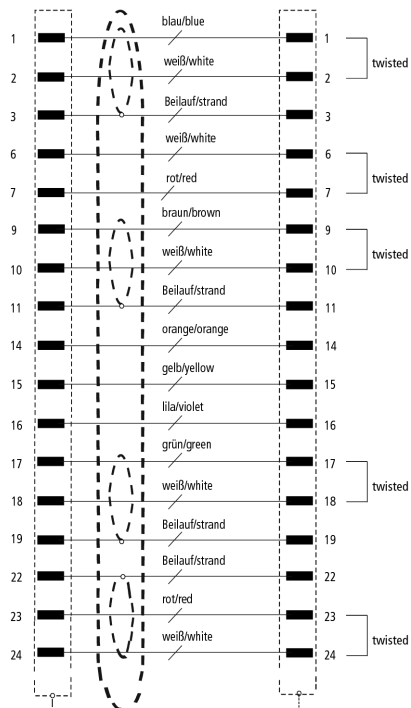
Plugs

Electrical data	Head A	Head B
Rated voltage	40 V (AC)	40 V (AC)
Rated current	1.5 A	1.5 A
Dielectric strength	500 V	500 V
Shielding	yes	yes
Contact resistance	< 30 mΩ	< 30 mΩ
Mechanical data		
Installation size	DVI-D	DVI-D
Connector type	plug	plug
Configuration	straight	straight
Contact type	male	male
Number of positions (face)	18 + 1-pin	18 + 1-pin
Way of locking	screw	screw
Body color	black	black
Body material	PBT	PBT

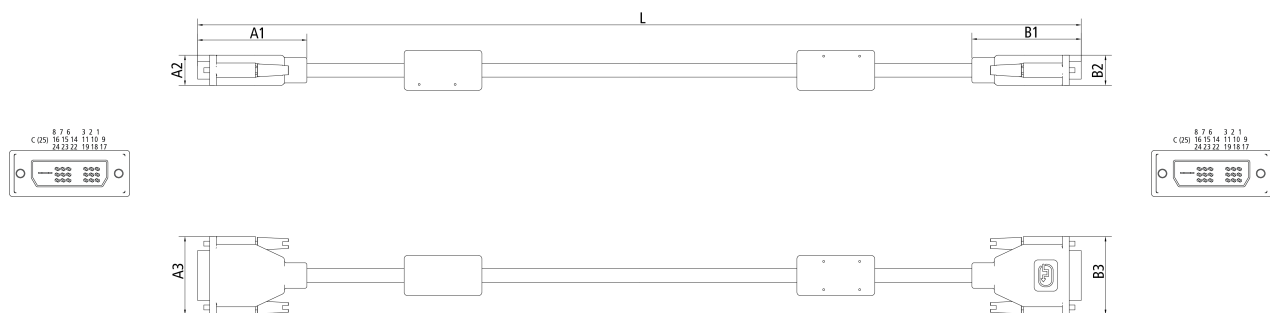
Contact carrier color	black	black
Environmental data		
RoHS compliant	yes	yes
Protection rating	IP20	IP20

Cable

Electrical data		
Operating voltage	30 V	
Wire resistance	28 AWG \leq 239 Ω /km (20 °C)	
Mechanical data		
Outer cable diameter	7.3 mm \pm 0.15 mm (0.2874" \pm 0.0059")	
Min. bending radius, fixed installation	10 x outer cable diameter	
Conductor material	copper, tinned	
Shielding	yes	
Optical covering factor of shielding	\geq 85%	
Use	fixed installation	
UL-Style	AWM 20276 (80°C/30V)	
Jacket color	black	
Material jacket	PVC (polyvinyl chloride)	
Wire color code	white, brown, white, red, white, green, white, blue, yellow, orange black, brown, red	
Printing on the jacket	E301195 UR AWM 20276 80°C 30V VW-1 DVI DIGITAL SINGLE LINK T7 network cables for professional performance	
Environmental data		
Operation temperature range, fixed installation	-10...+80 °C, +14...+176 °F	
Acid, lye and solvent resistance	limited resistance to acids, alkalis and solvents	
Contact assembly		



Dimensions



A1	57.6 mm
A2	13.5 mm
A3	40.0 mm
B1	57.6 mm
B2	13.5 mm
B3	40.0 mm

Notes

- Depending on the cable length (L), the following length tolerances apply:
4.0 m ... 5,5 m: ± 15 mm | 10.0 m: ± 30 mm | 18.0 ... 50.0: ± 50 mm
- Illustrations similar
- Further cable length on request.

CE, UL

CE	yes
----	-----

Ordering information

Length

C9900-K549	1.00 m
C9900-K568	1.80 m
C9900-K550	3.00 m
C9900-K527	5.00 m



Products marked with a crossed-out wheeled bin shall not be discarded with the normal waste stream. The device is considered as waste electrical and electronic equipment. The national regulations for the disposal of waste electrical and electronic equipment must be observed.

Beckhoff®, TwinCAT®, TwinCAT/BSD®, TC/BSD®, EtherCAT®, EtherCAT G®, EtherCAT G10®, EtherCAT P®, Safety over EtherCAT®, TwinSAFE®, XFC®, XTS® and XPlanar® are registered trademarks of and licensed by Beckhoff Automation GmbH. Other designations used in this publication may be trademarks whose use by third parties for their own purposes could violate the rights of the owners.

© Beckhoff Automation GmbH & Co. KG 07/2023

The information provided in this brochure contains merely general descriptions or characteristics of performance which in case of actual application do not always apply as described or which may change as a result of further development of the products. An obligation to provide the respective characteristics shall only exist if expressly agreed in the terms of contract.